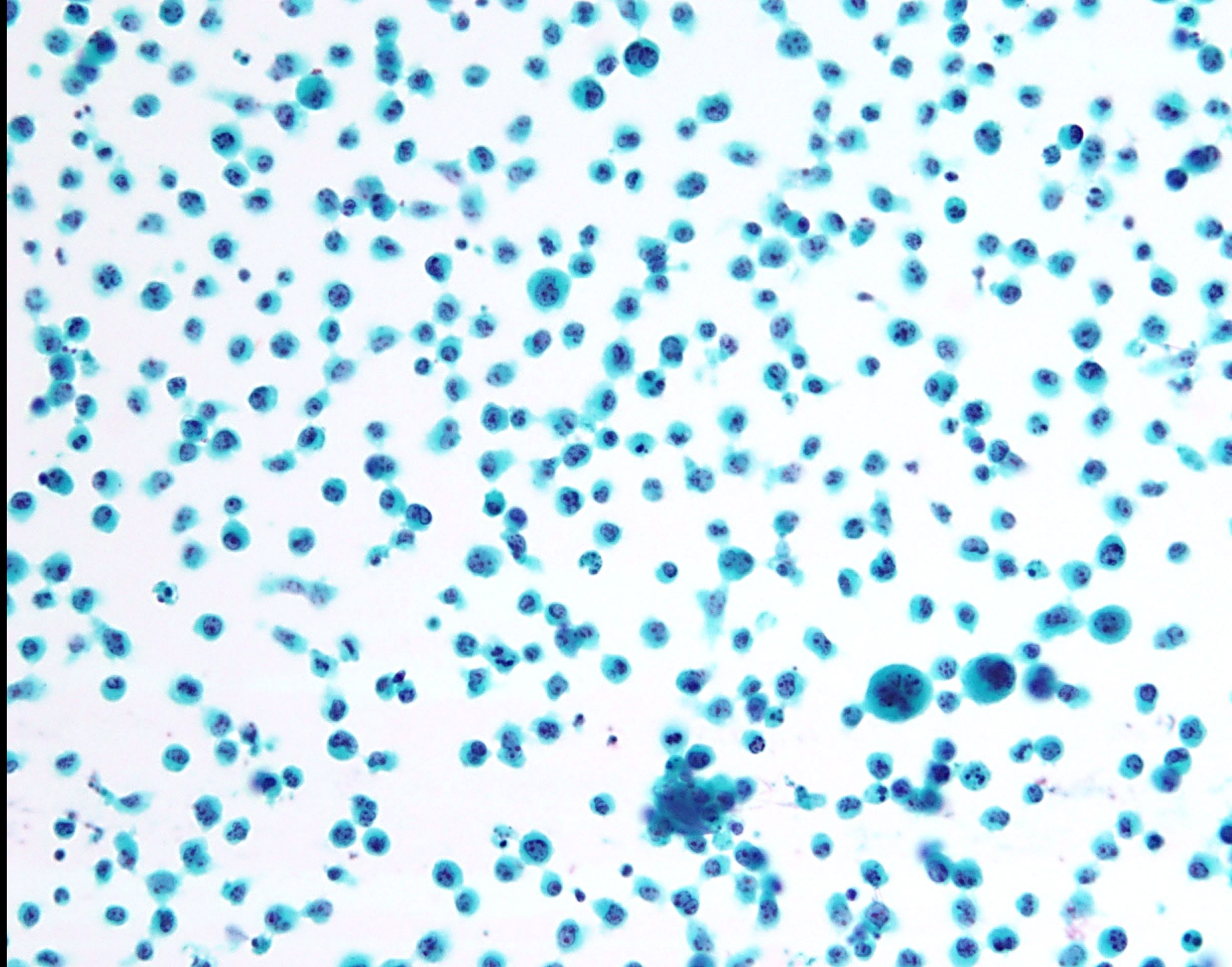
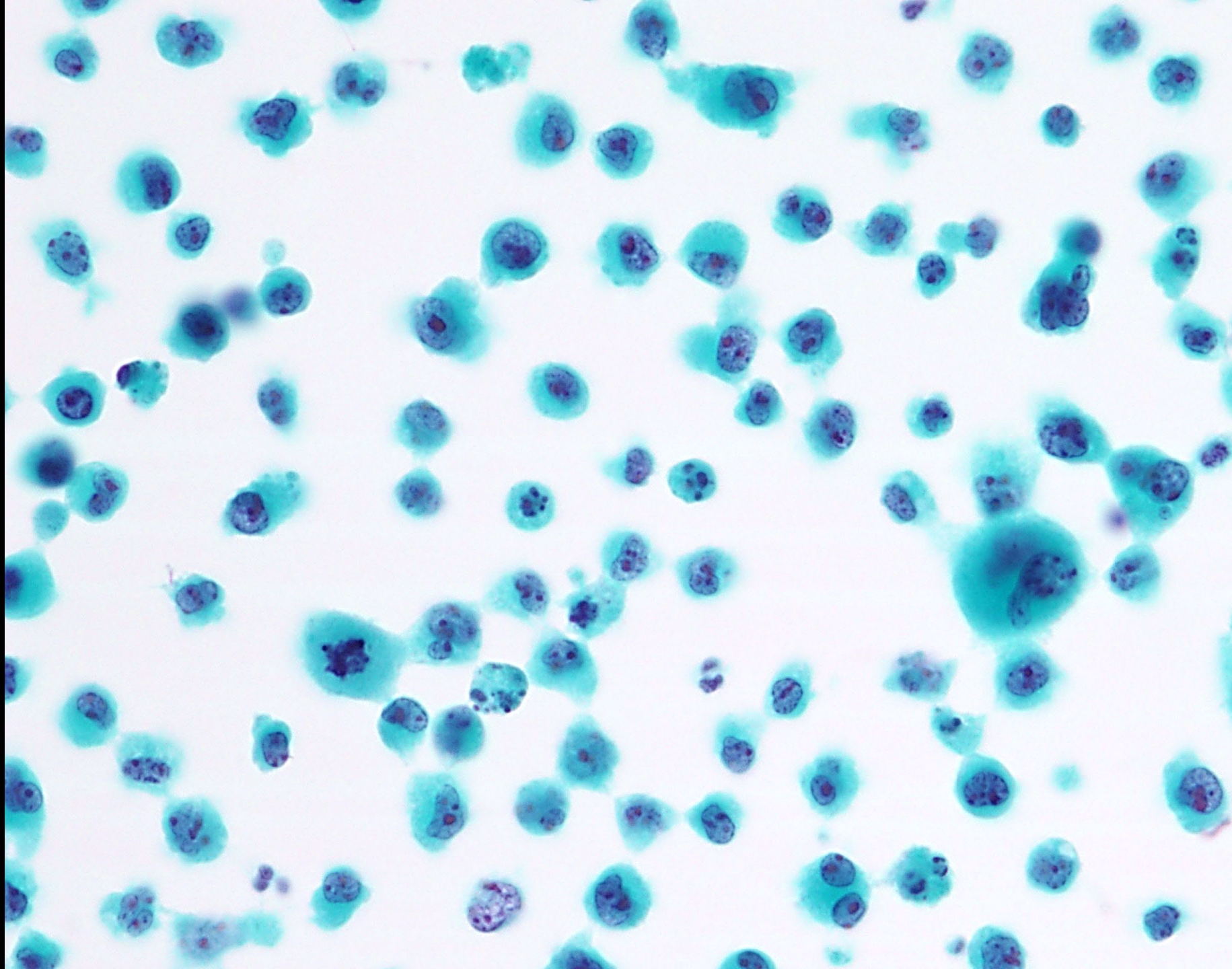


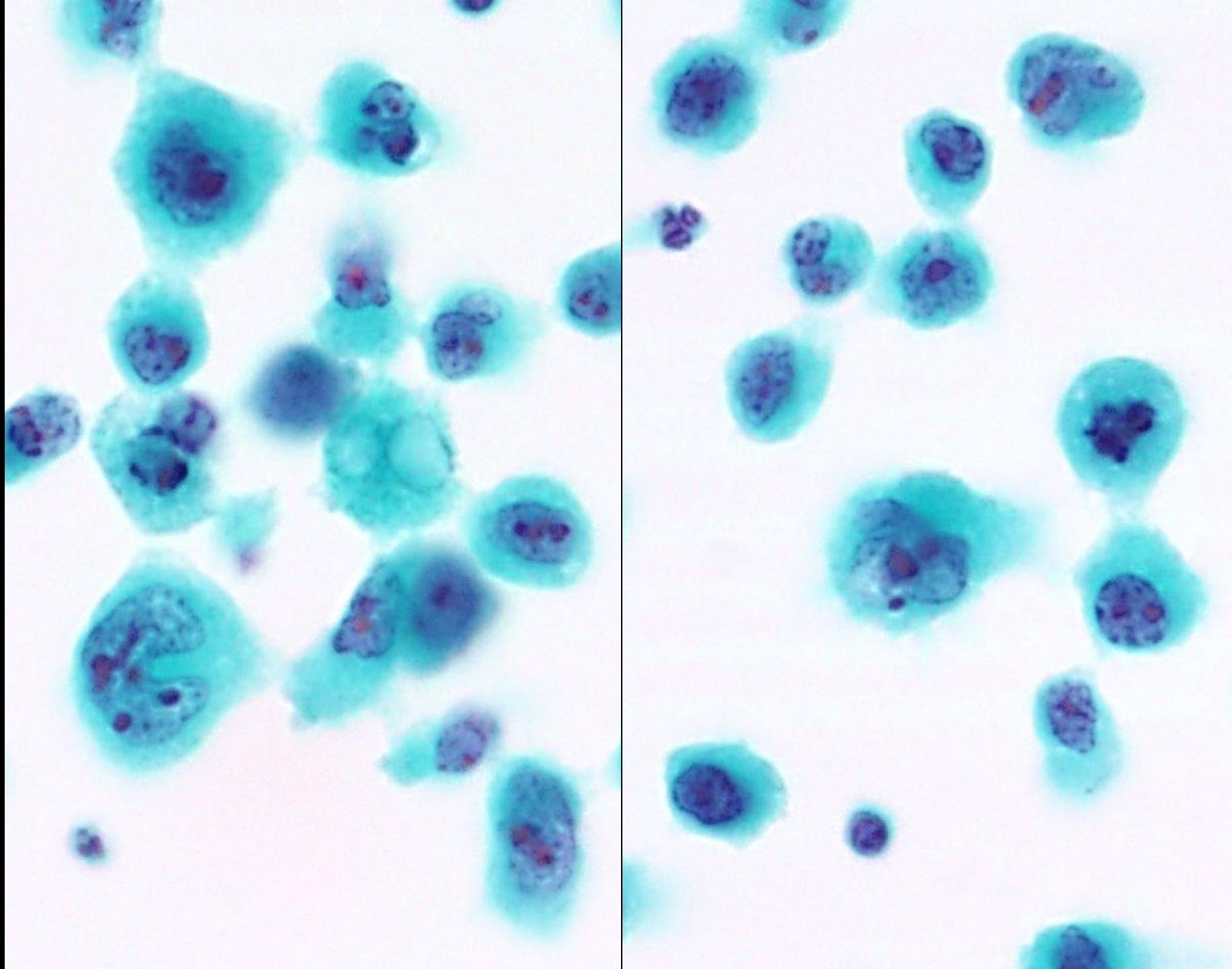
Pap弱拡大



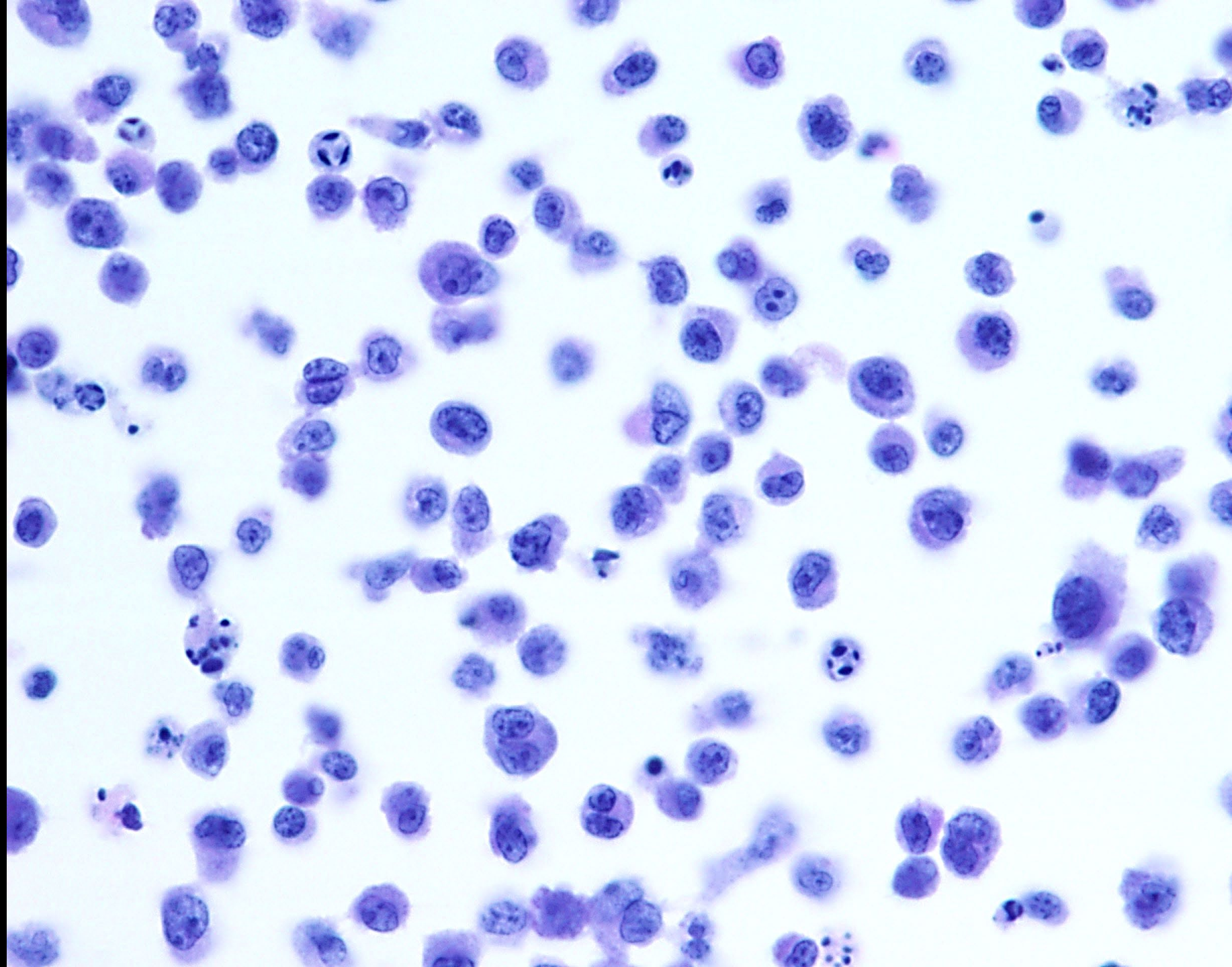
Pap中拡大



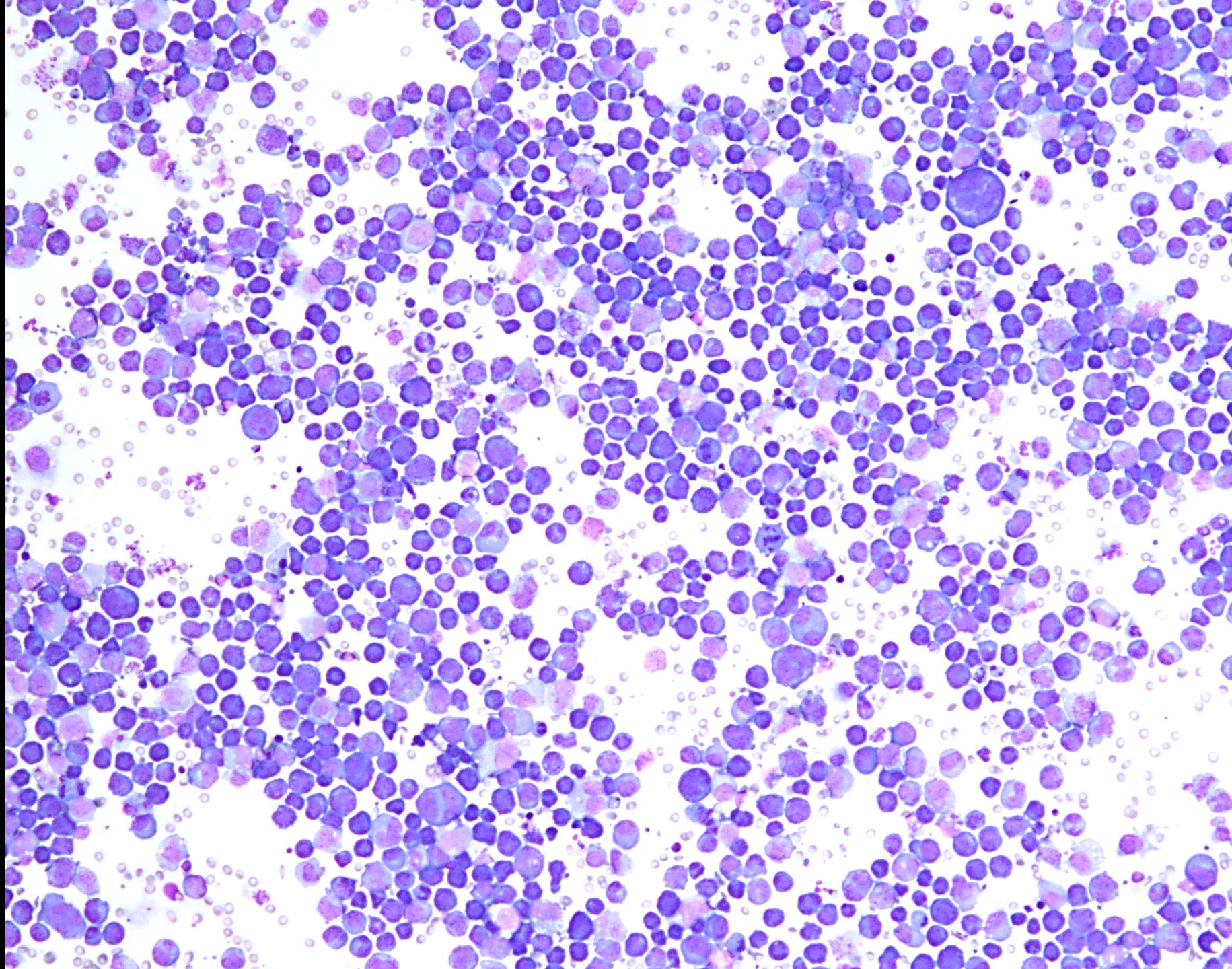
Pap強拡大



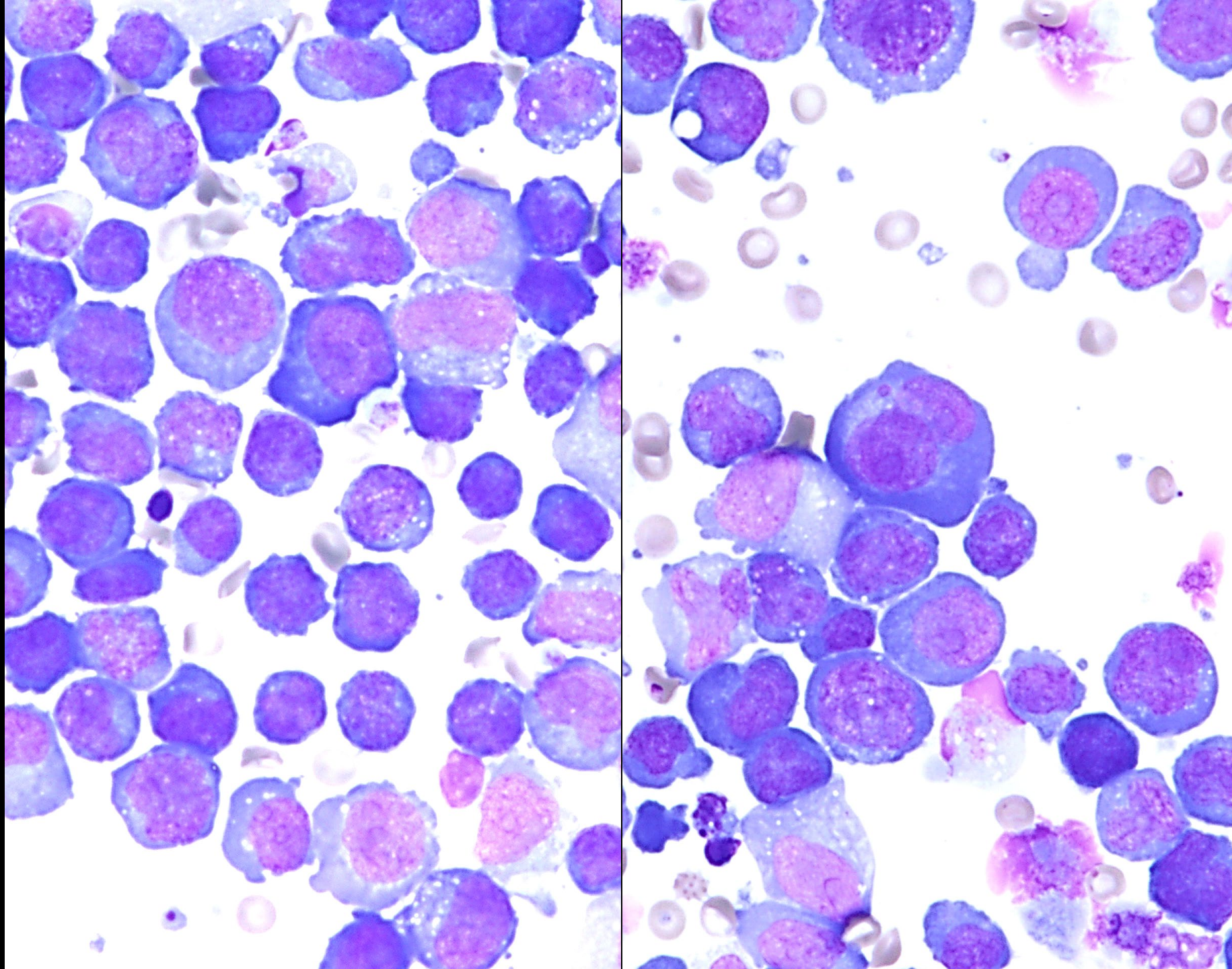
Pap強拡大



PAS強拡大



Giemsa
弱拡大



Giemsa
強拡大

1. 反応性中皮細胞
2. 悪性中皮腫
3. 腺癌の転移
4. 扁平上皮癌の転移
5. 悪性リンパ腫