

症例検討 2

子宮体部

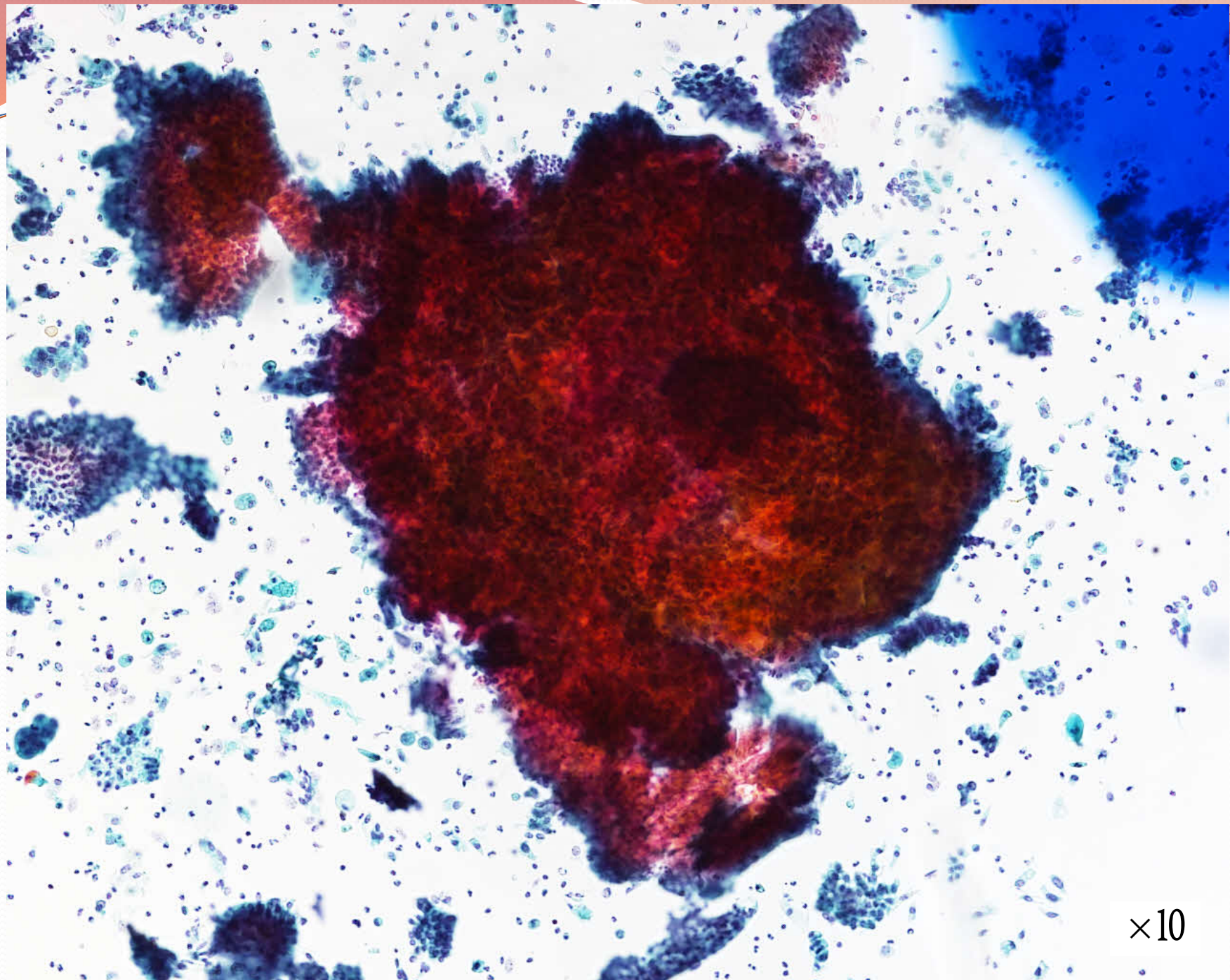
症例検討 2

- 80代
- 採取部位：子宮体部
- 採取器具：内膜エンドサーチ
- SurePath法
- 臨床所見

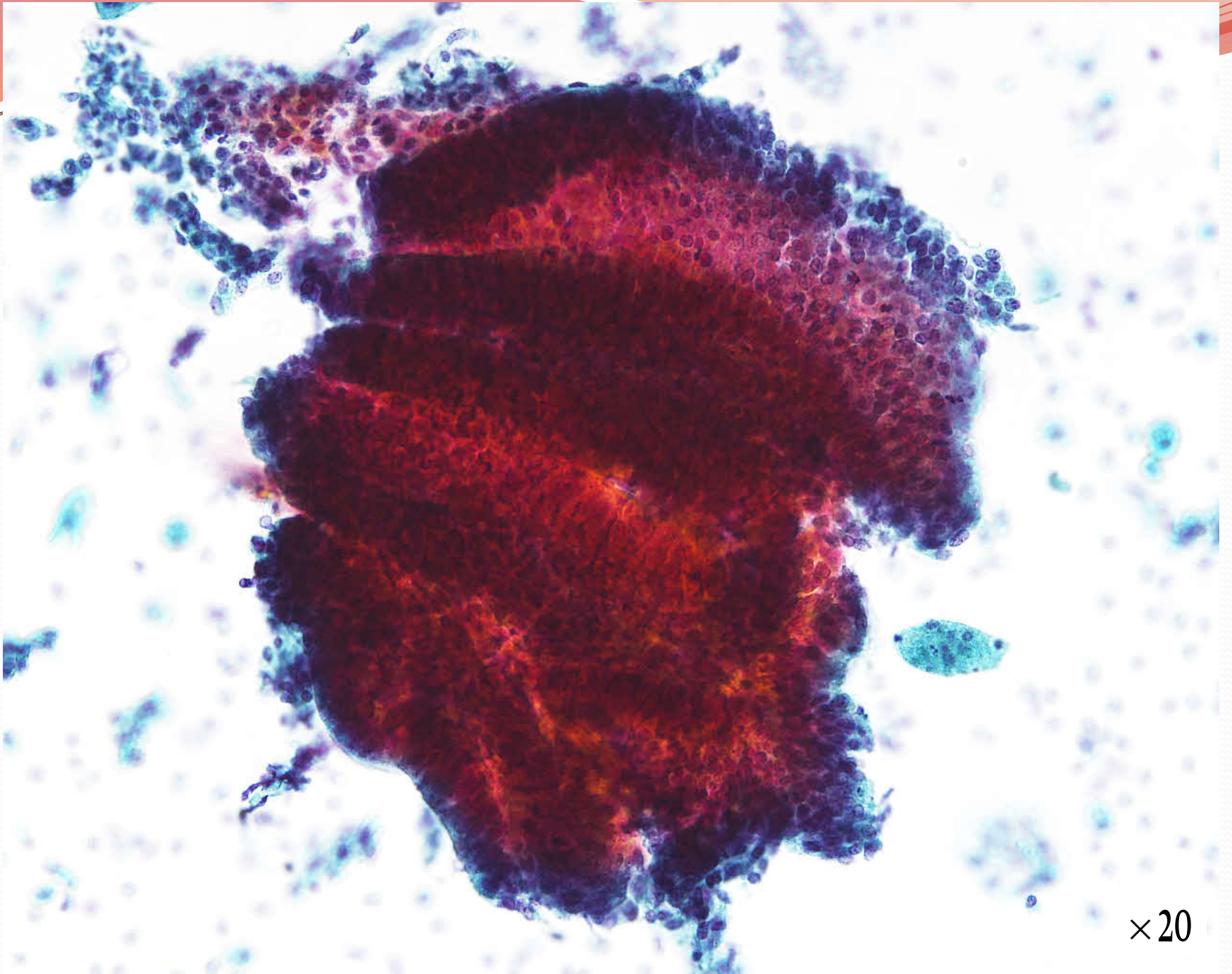
不正出血が続き近医受診

子宮内腔に2cm程度の不整な腫瘍あり

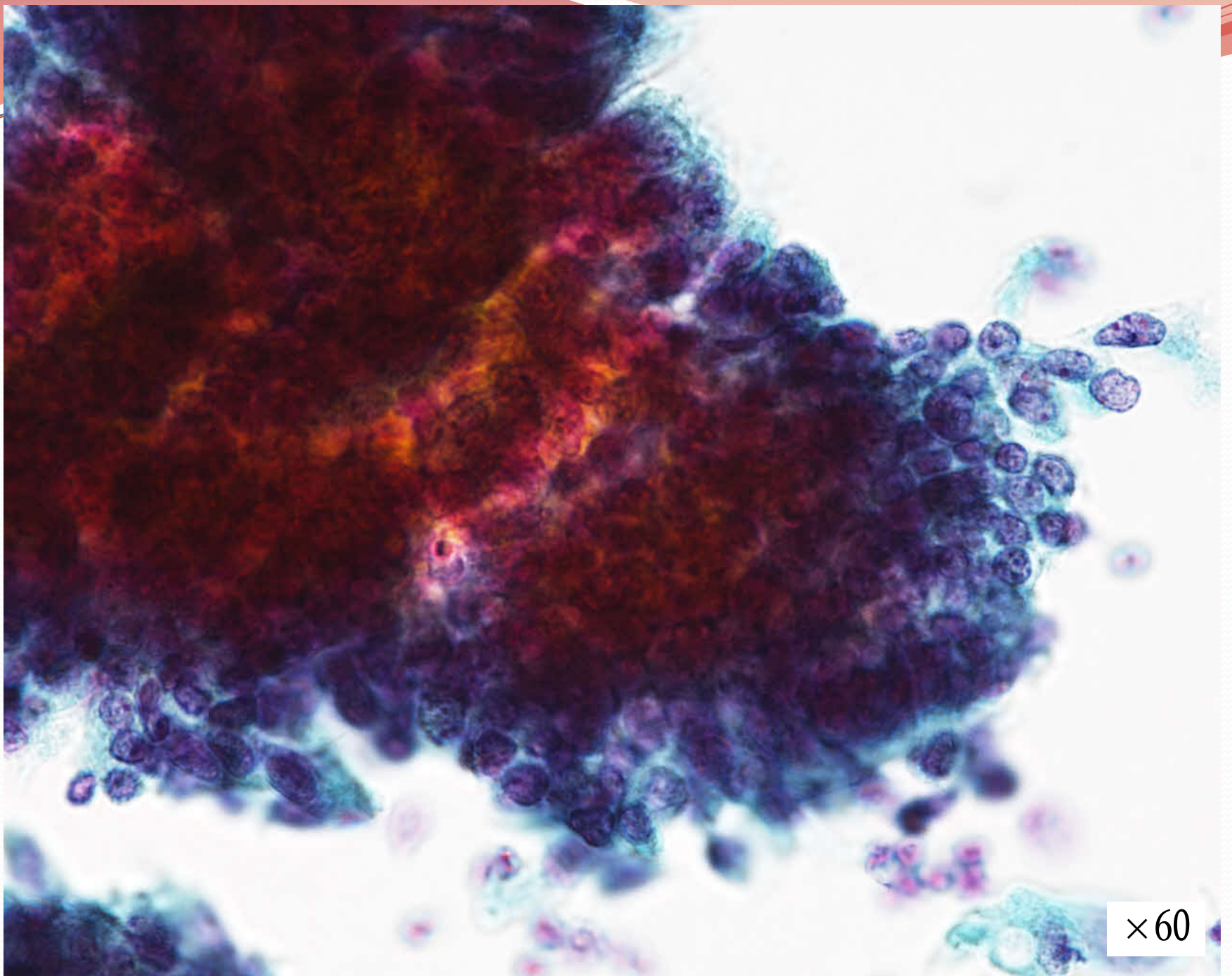
子宮体癌の疑いで当院紹介受診



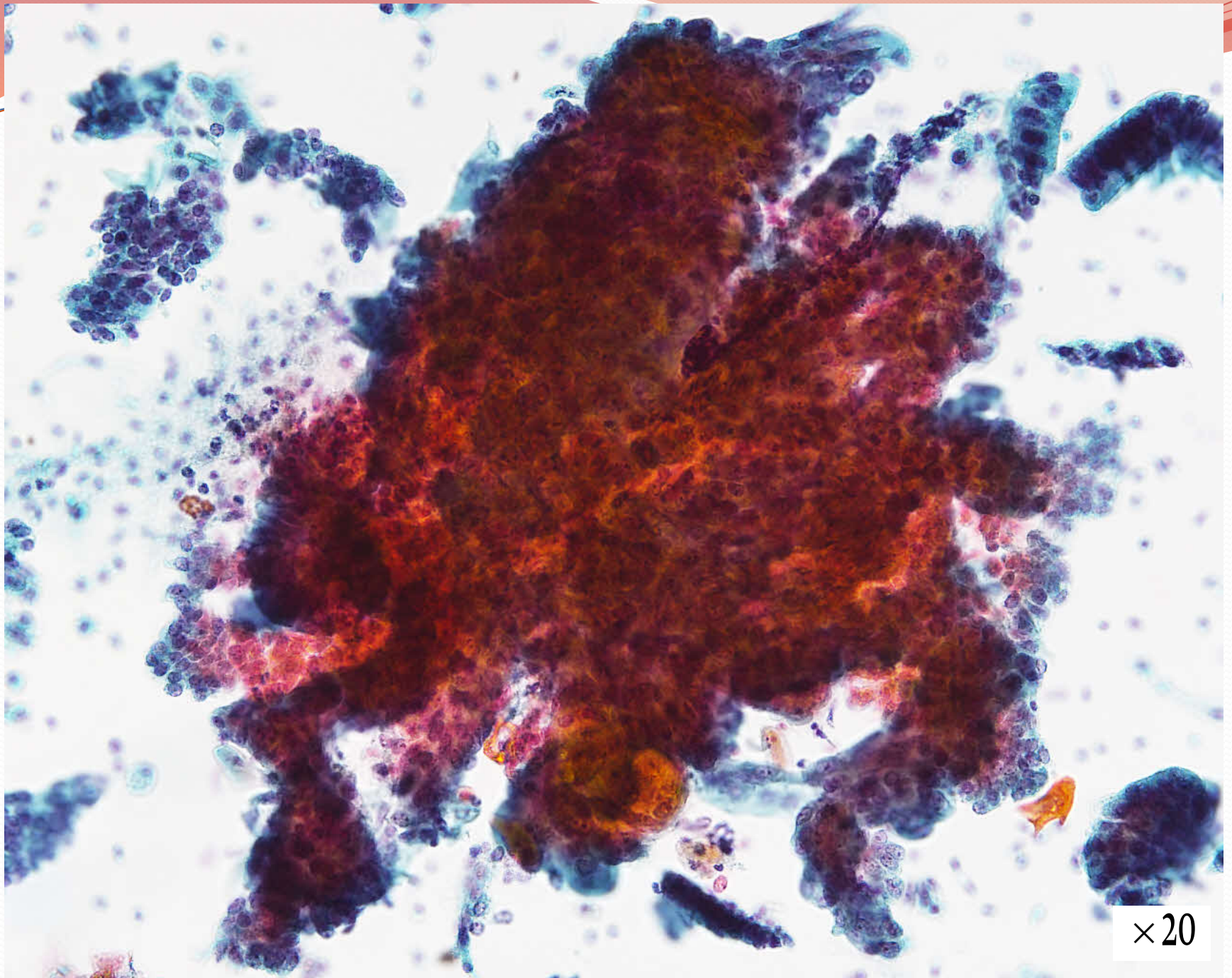
×10



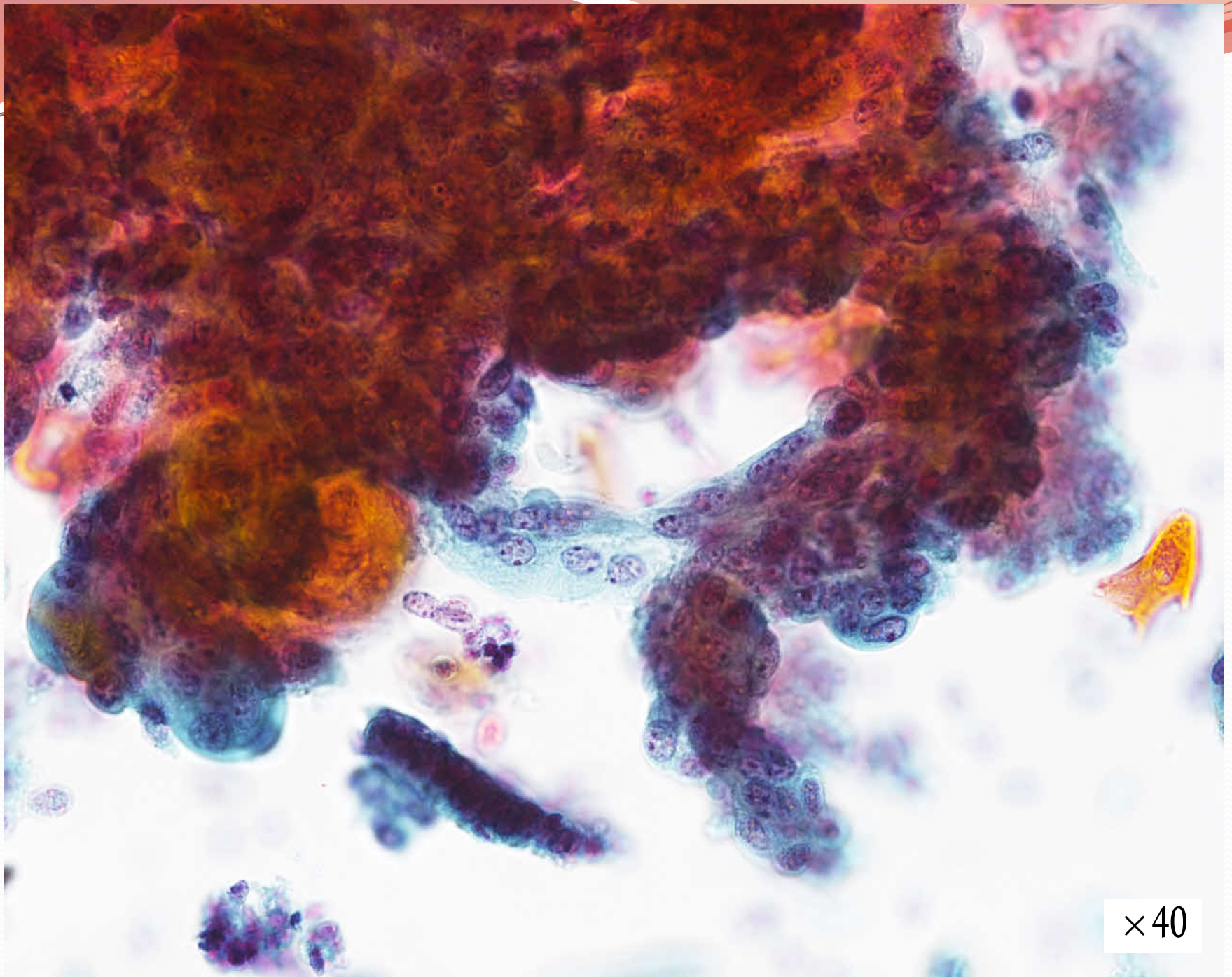
×20



×60



×20



×40