

症例検討 1

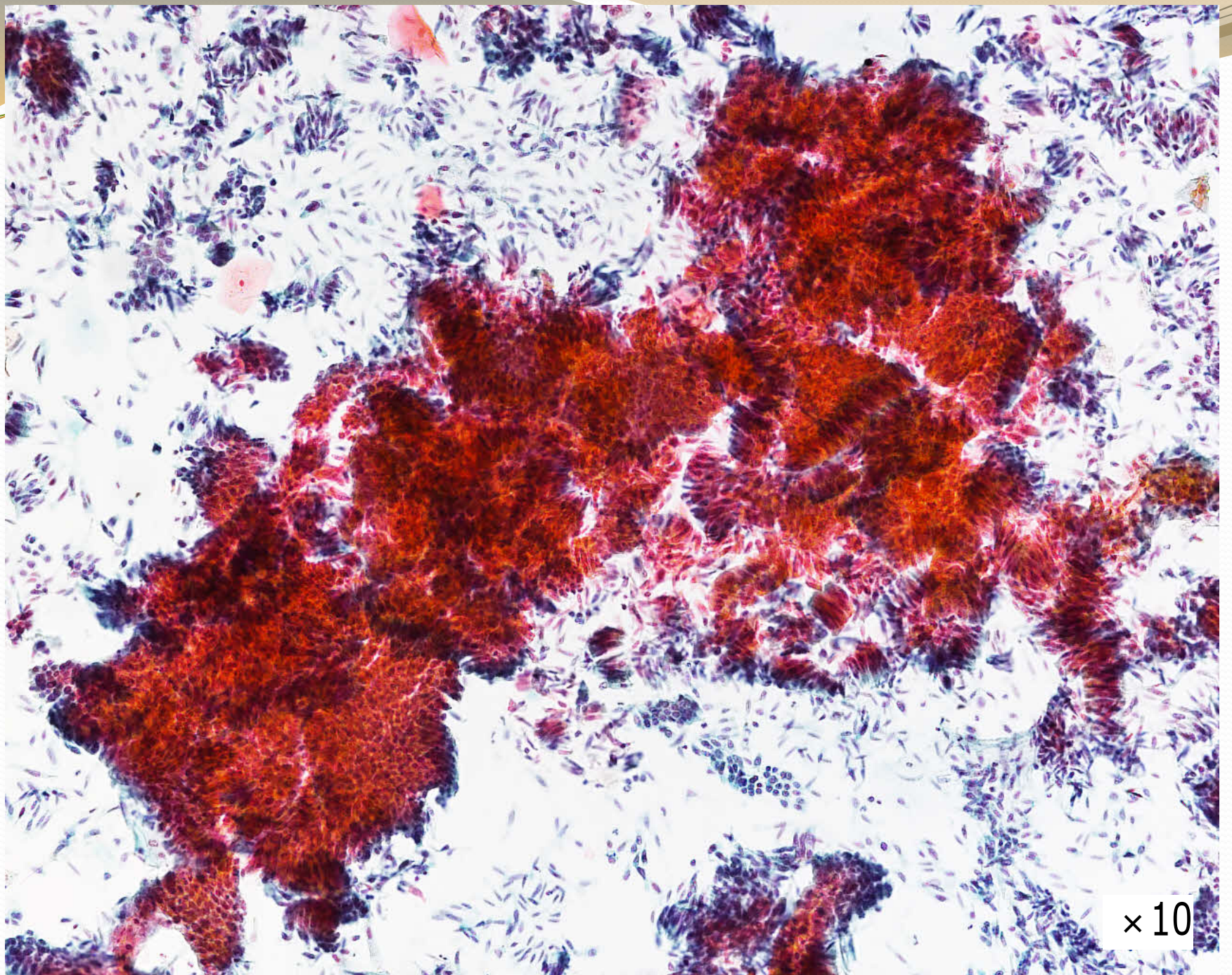
子宮腔部・頸部

症例検討 1

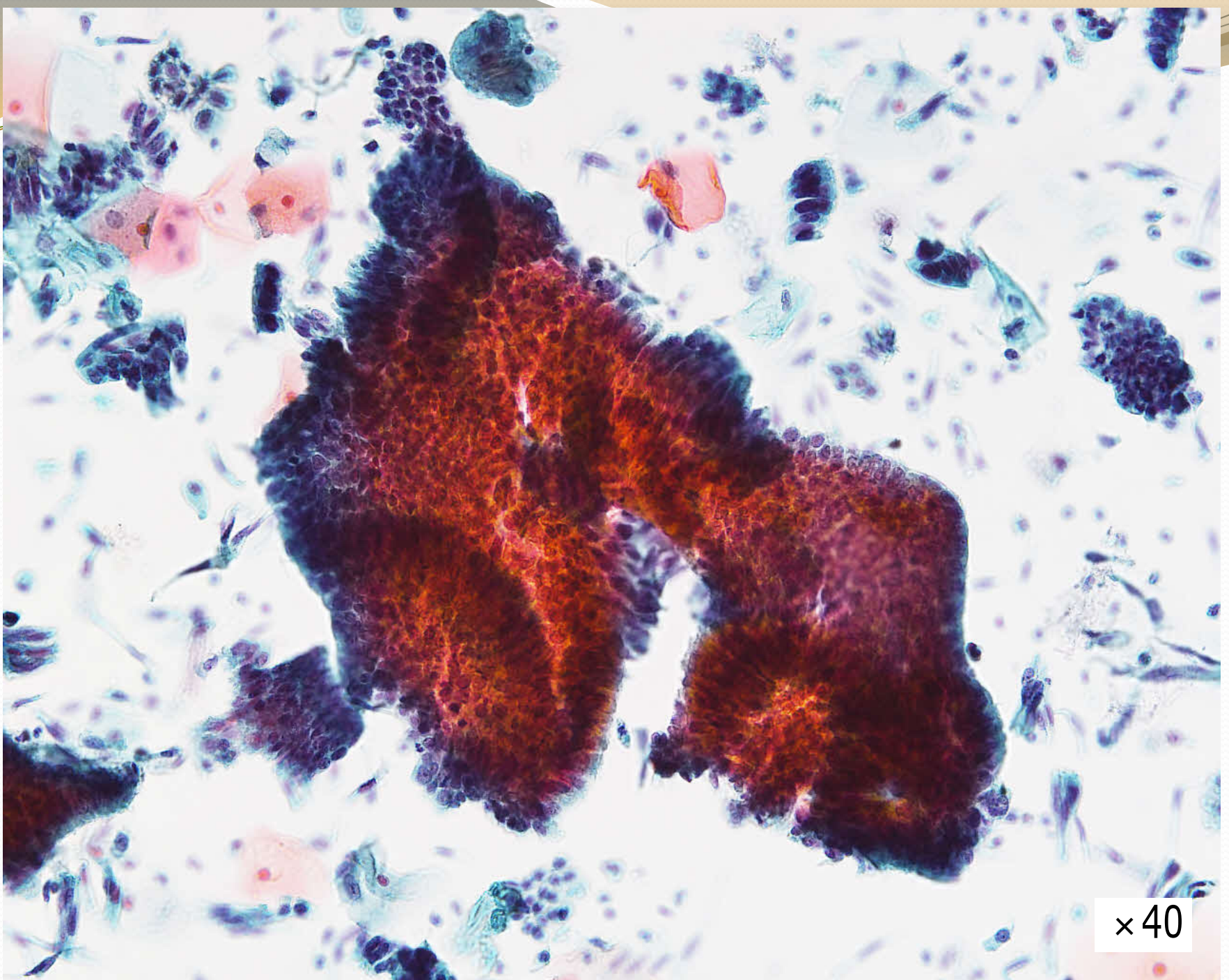
- 30代
- 採取部位：子宮腔部・頸部
- 採取器具：Cervex7[®] ラシCOMBI
- SurePath法
- 臨床所見

検診にて子宮頸部細胞診異常を指摘され当院紹介受診

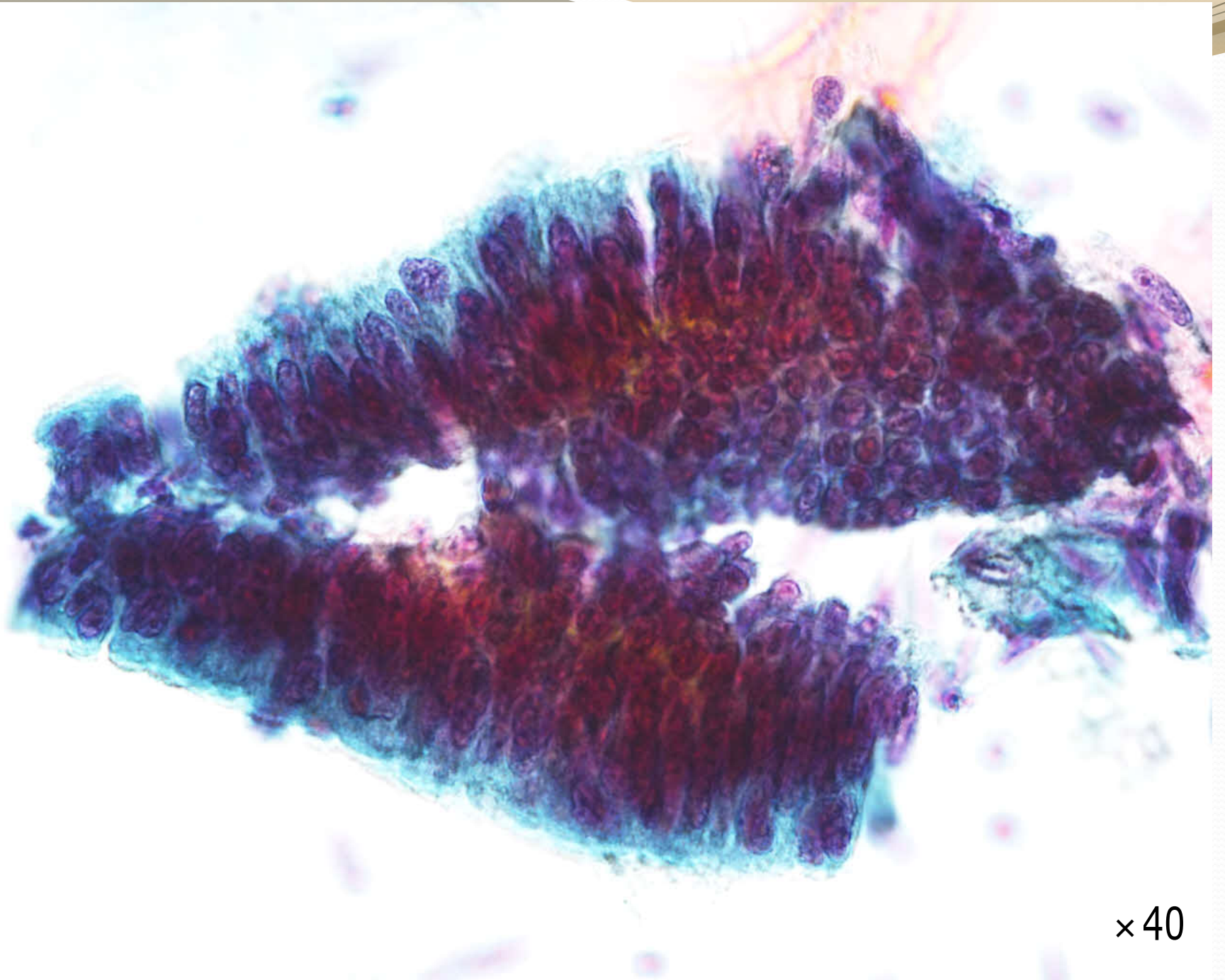
Colposcopyでは子宮頸部に乳頭状隆起性病変あり



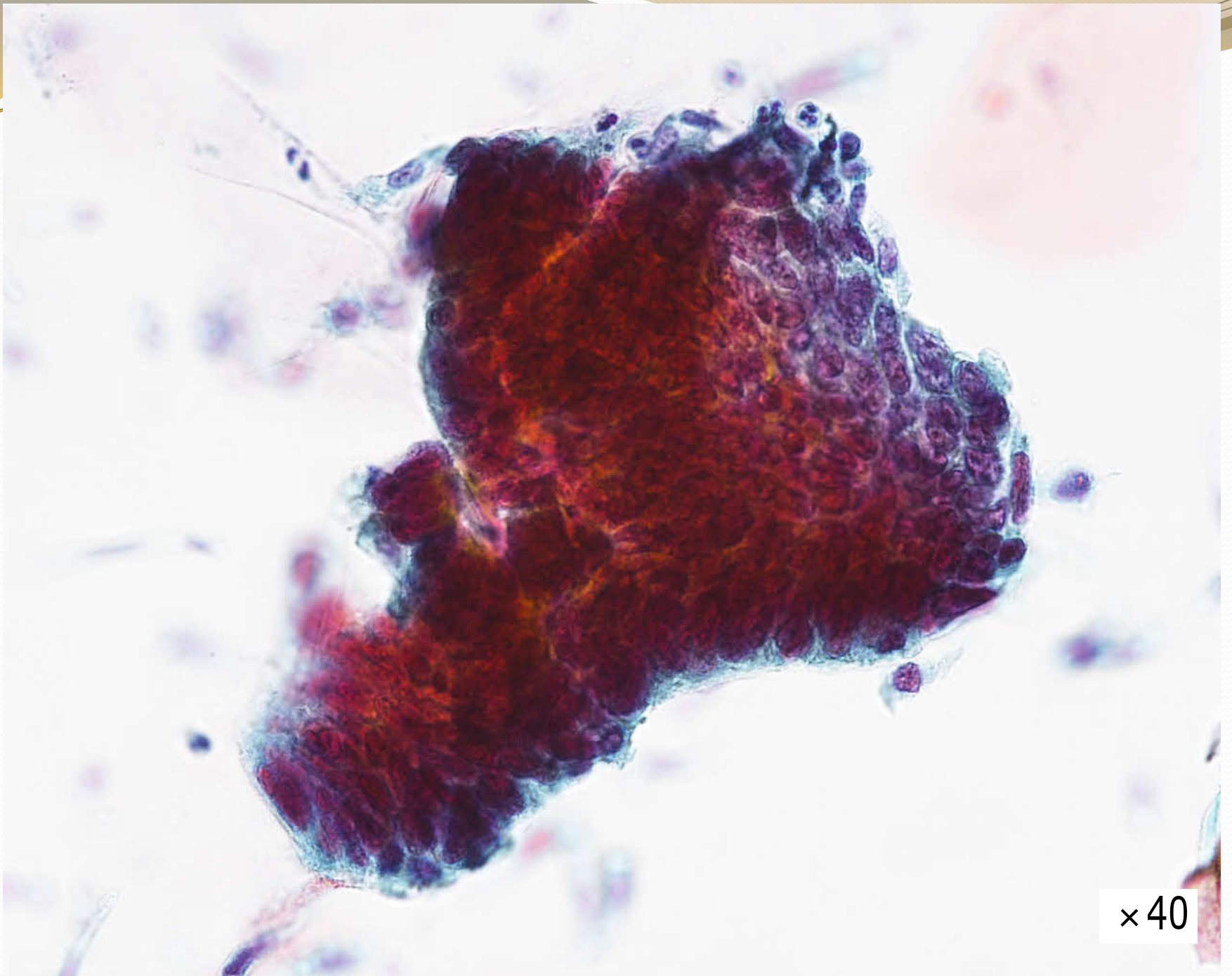
× 10



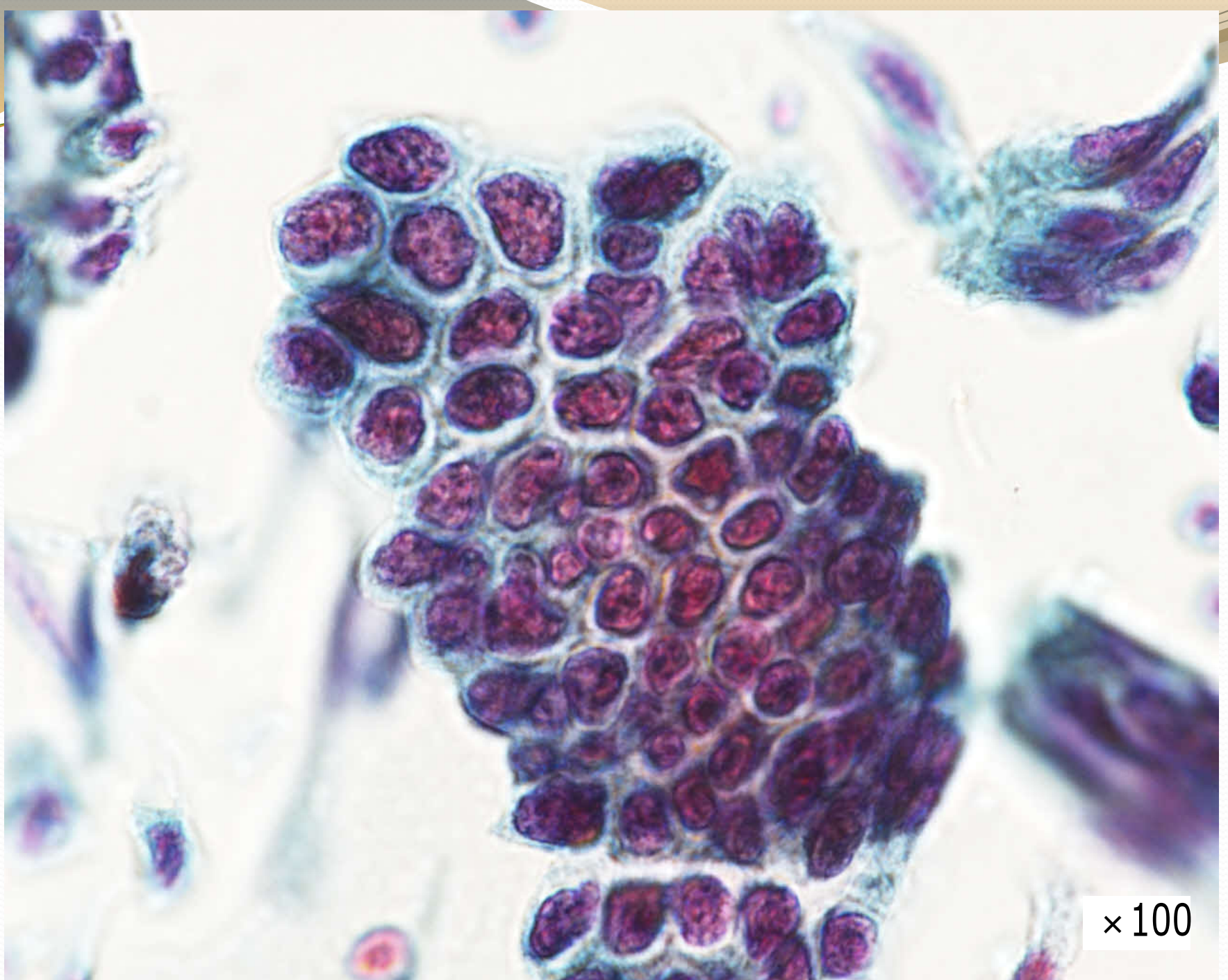
× 40



×40



× 40



× 100